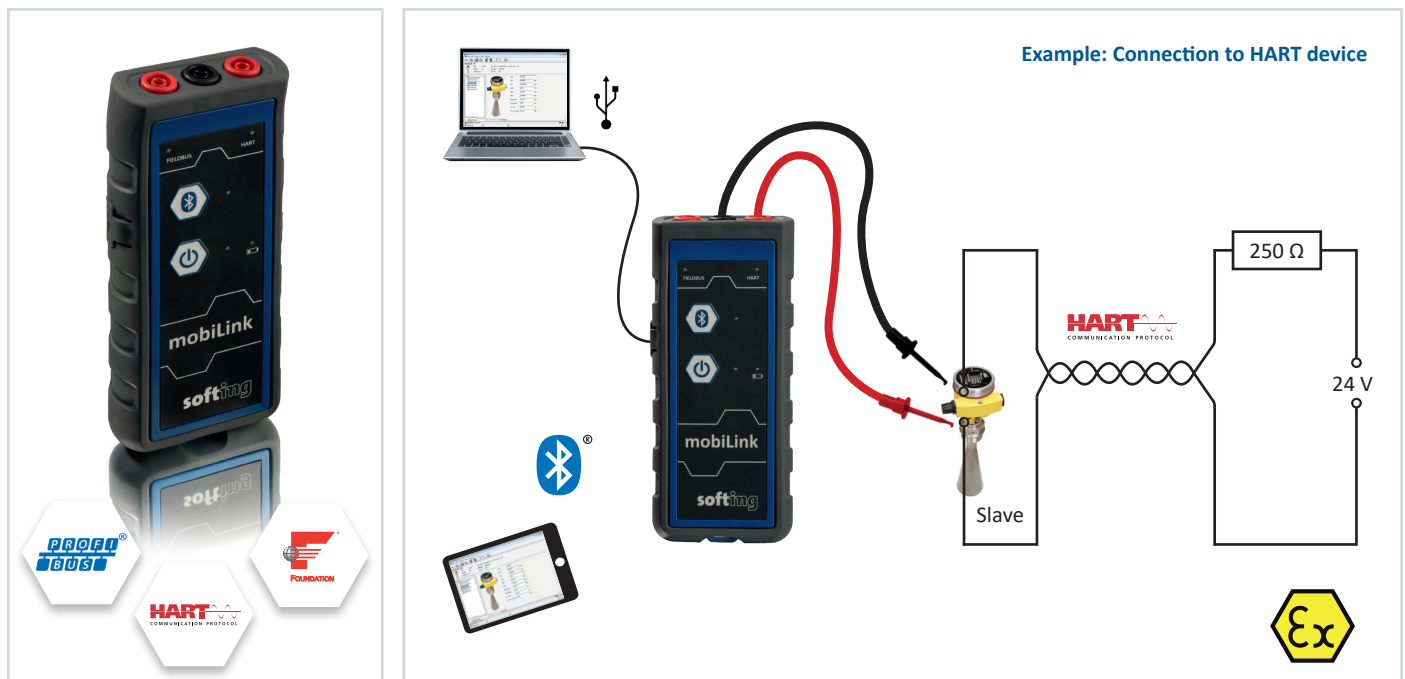


# mobiLink

## Mobile Commissioning and Maintenance Interface for Field Devices

- Single interface for the major Process Automation protocols:  
HART / FOUNDATION Fieldbus / PROFIBUS PA
- Perfectly suited for handheld host devices due to battery powered Bluetooth operation
- Compatible with FDT Frame Applications
- Approved for use in hazardous areas



### Multi protocol operation

- HART Master, FOUNDATION Fieldbus Host and PROFIBUS PA Master included in one device
- Temporary attachment to fieldbus segments or HART loops for individual interaction with field devices
- Fully compliant protocol implementations allow for interference-free access to running plants

### Host communication via Bluetooth or USB

- Built-in batteries and Bluetooth communication enable use of handheld host devices like smart phones and tablets
- USB interface for bench host operation

### Support of FDT Frame Applications and major Engineering Tools

- PACTware FDT Frame Application and HART Communication DTM included
- Communication DTM for FOUNDATION Fieldbus and PROFIBUS PA (optional)
- FOUNDATION Fieldbus configuration tool (optional)
- Application Program Interface for integration into Engineering Systems

### Suitable for use in hazardous areas

- IECEx and EX approval for Zone 1
- Suitable for connection to intrinsically safe circuits
- Suited for harsh environment

## Technical Data

<b>User Interface</b>	Controls	Power on/off button, Bluetooth pairing button
	Status LEDs	FIELDBUS (Fieldbus mode), HART (HART mode), Bluetooth (Pairing/Bluetooth active), Low battery, Power on
<b>Interfaces and Connectors</b>	USB	Speed: USB 2.0 Full Speed, Connector: USB Type C Electrical: Non intrinsically safe. Do not use inside hazardous areas. 5 V, 100 mA. Um = 253 V
	Bluetooth	Dual Mode (BT Classic and BLE), 2.4 - 2.478 GHz, Output Power: +8 dBm (maximum)
	Fieldbus	Connection: 4 mm banana type jacks (red/black), polarity has to be observed Physical Layer: according to IEC 61158-2, Type 1: 31.25 Kbit/s, voltage mode Nominal input current (Fieldbus): 10 mA in Bluetooth and regular USB mode 18 mA (with fieldbus voltage > 9,5V) for increased battery life time in USB mode (controlled by application) Fieldbus Terminator: No built-in fieldbus terminator
	HART	Connection: 4 mm banana type jacks (red/black) Physical Layer: HART FSK compliant modem
<b>Operation in Hazardous Areas</b>	Intrinsic Safety Parameters	EX ia IIB, Ui = 30 V or FISCO field device Isolation: 1500 VDC between USB and Fieldbus, 1500 VDC between USB and HART
	IECEx	Ex ib [ia Gb] IIB (HW version 1.00), IIC (HW version 1.01) T4 Gb; Ex ib [ia Da] IIIC T100°C Db
	ATEX	II 2G Ex ib [ia Ga] IIB (HW version 1.00), IIC (HW version 1.01) T4 Gb; II 2D Ex ib [ia Da] IIIC T100°C Db
<b>Physical Properties</b>	Dimensions (L x W x D)	175 mm x 74 mm x 32 mm
	Weight	330 g (incl. Batteries)
	Power Supply	Battery: 3 * Alkaline, IEC-LR6, nominal voltage 1,5 V For use in hazardous area: Energizer E91 or Duracell Procell MN1500. With batteries of other types or manufacturers certification is void. Fieldbus interface (Medium Attachment Unit) powered by fieldbus.
	Operating Temperature	-20°C .. +50°C
	Storage	Store batteries in a dry place at normal room temperature.
	Relative Humidity	< 95% rH non condensing
	Protection Class	IP 54 (if USB port covered with cap)
<b>Radio permit</b>	EU countries, USA, Canada and Japan, other countries on request	

## Scope of Delivery

Hardware	mobiLink, USB cable, fieldbus cable set with clips, 3 * Alkaline IEC-LRC6
Software	mobiLink Manager, PACTware, Communication DTM for HART, FOUNDATION Fieldbus and PROFIBUS PA (for FOUNDATION Fieldbus and PROFIBUS PA optional license required) FOUNDATION Fieldbus Configuration Tool ComConf (optional license required)
Documentation	User Guide, Quick Start Guide

## Order Numbers

DBA-KM-020410	<b>mobiLink</b> for HART applications, including accessories
LRA-KK-021973	<b>linkPlus FF</b> – License to activate FOUNDATION Fieldbus
LRA-LL-021974	<b>linkPlus PA</b> – License to activate PROFIBUS PA
LRA-KK-020721	Licence for FF Configuration Tool ComConf

Your local Softing contact:

<http://industrial.softing.com>

optimize!  
**softing**